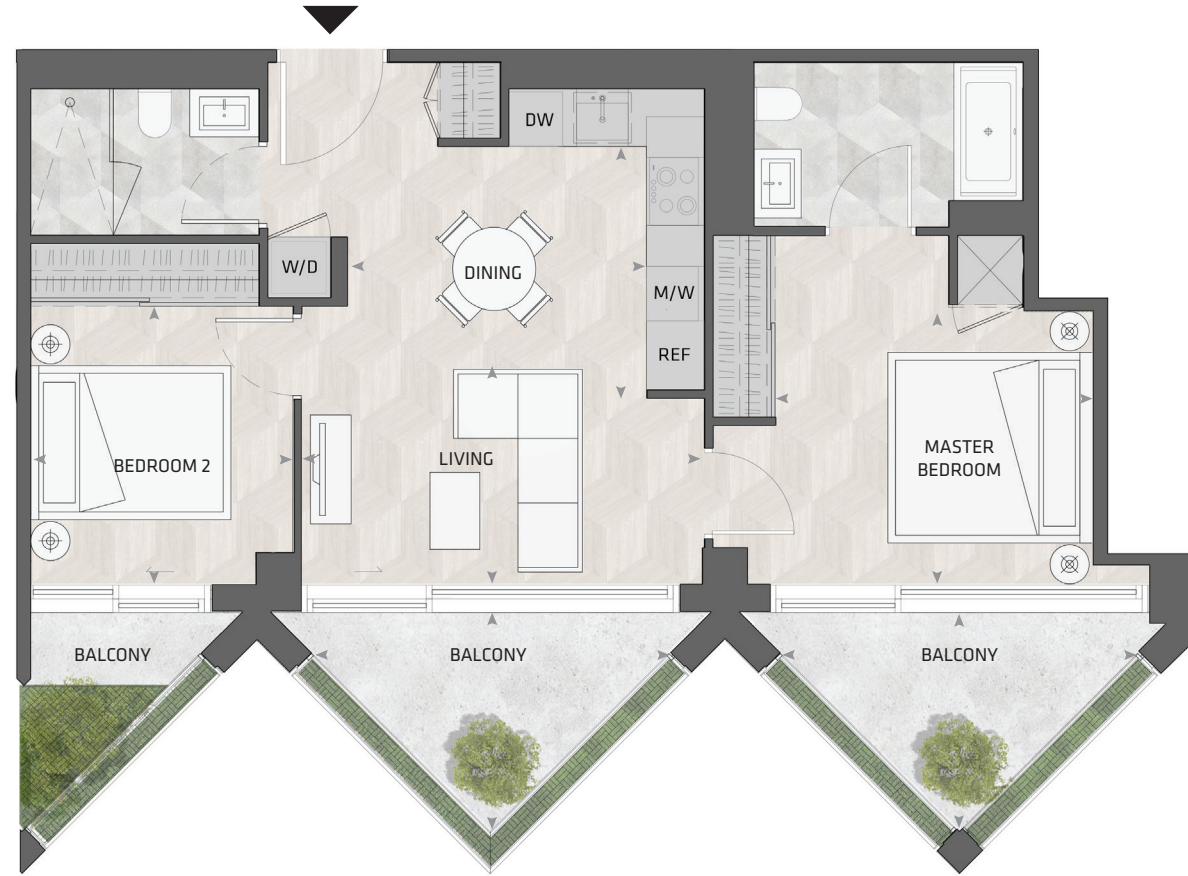


KING

HOME 601 N



2BD.06

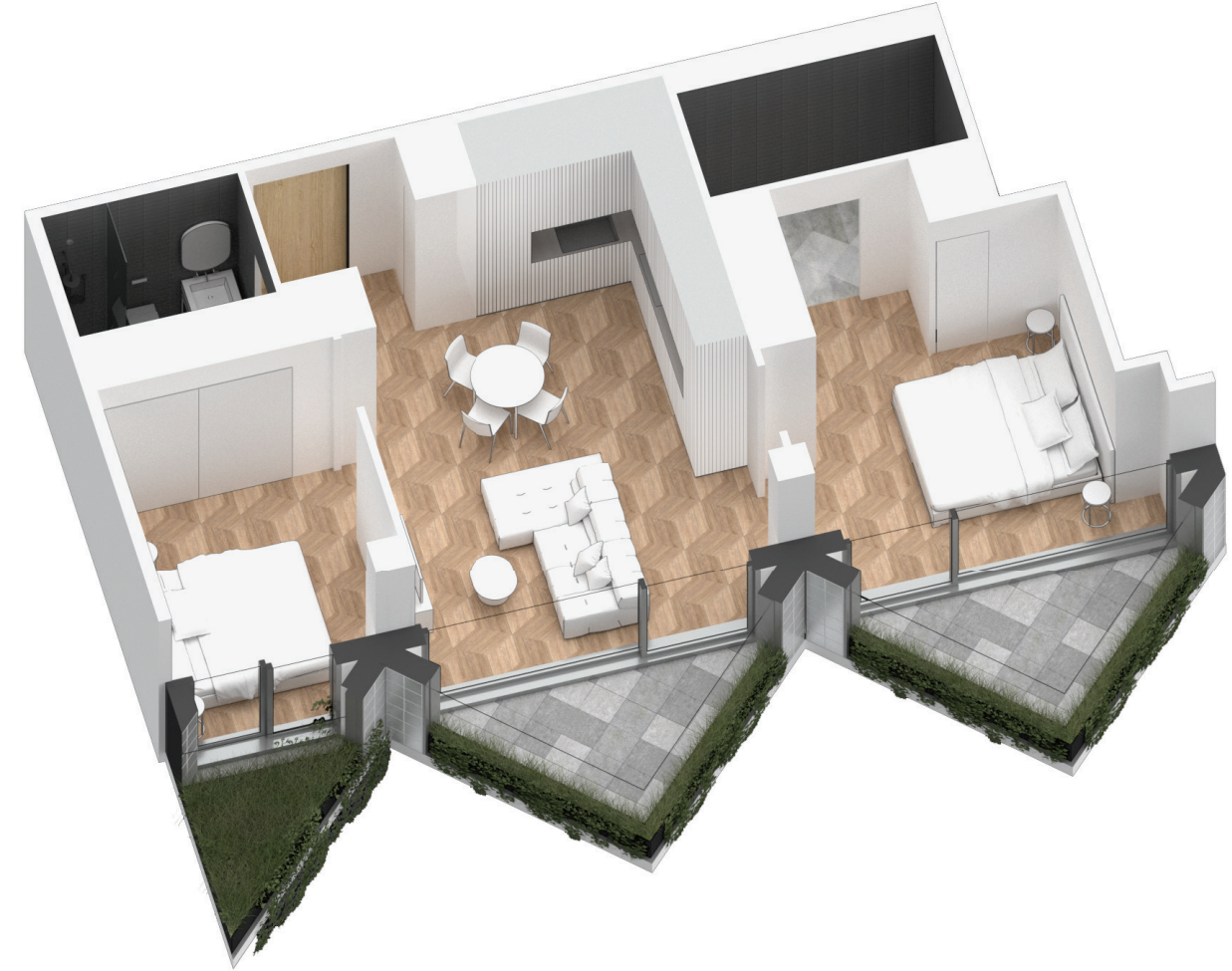
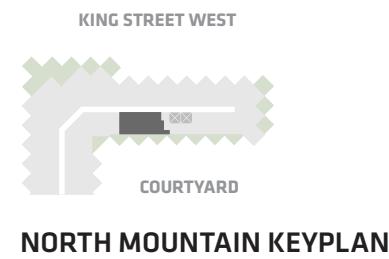
**2 Bedroom
2 Bathroom**

**Total Living:
1053 ft²**

Interior Living:
833 ft²

Exterior Living:
220 ft²

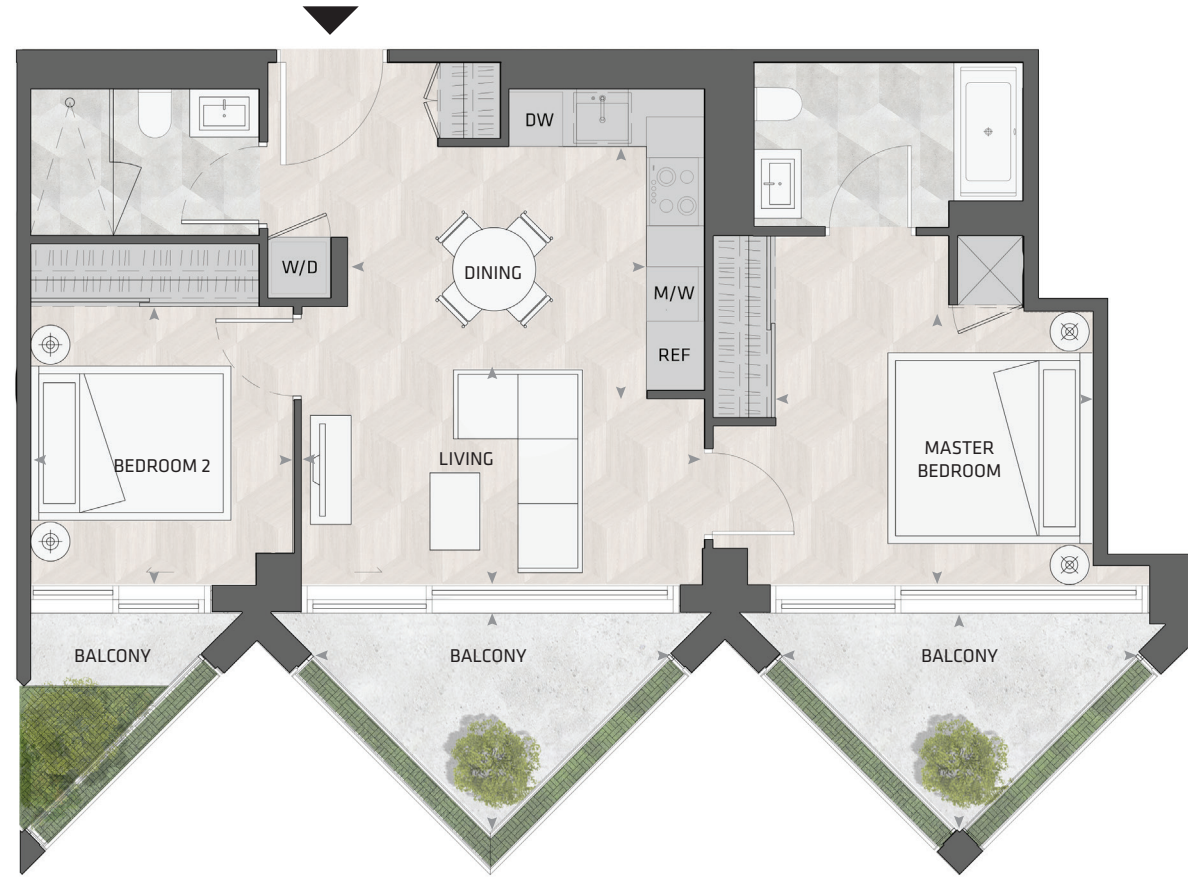
LIVING	14' 6" X 8' 0"
DINING	10' 10" X 9' 1"
MASTER BD	11' 5" X 9' 6"
BEDROOM 2	9' 6" X 10' 1"
BALCONY	13' 0" X 7' 9"



All dimensions and specifications are approximate. Certain plans are reverse or mirror image. Balcony square footages are estimated and may vary from that stated. Please see Sales Representative for details. Furniture not included. Refer to key plan for unit location and orientation. E. & O.E.

KING

HOME 501 N



2BD.06

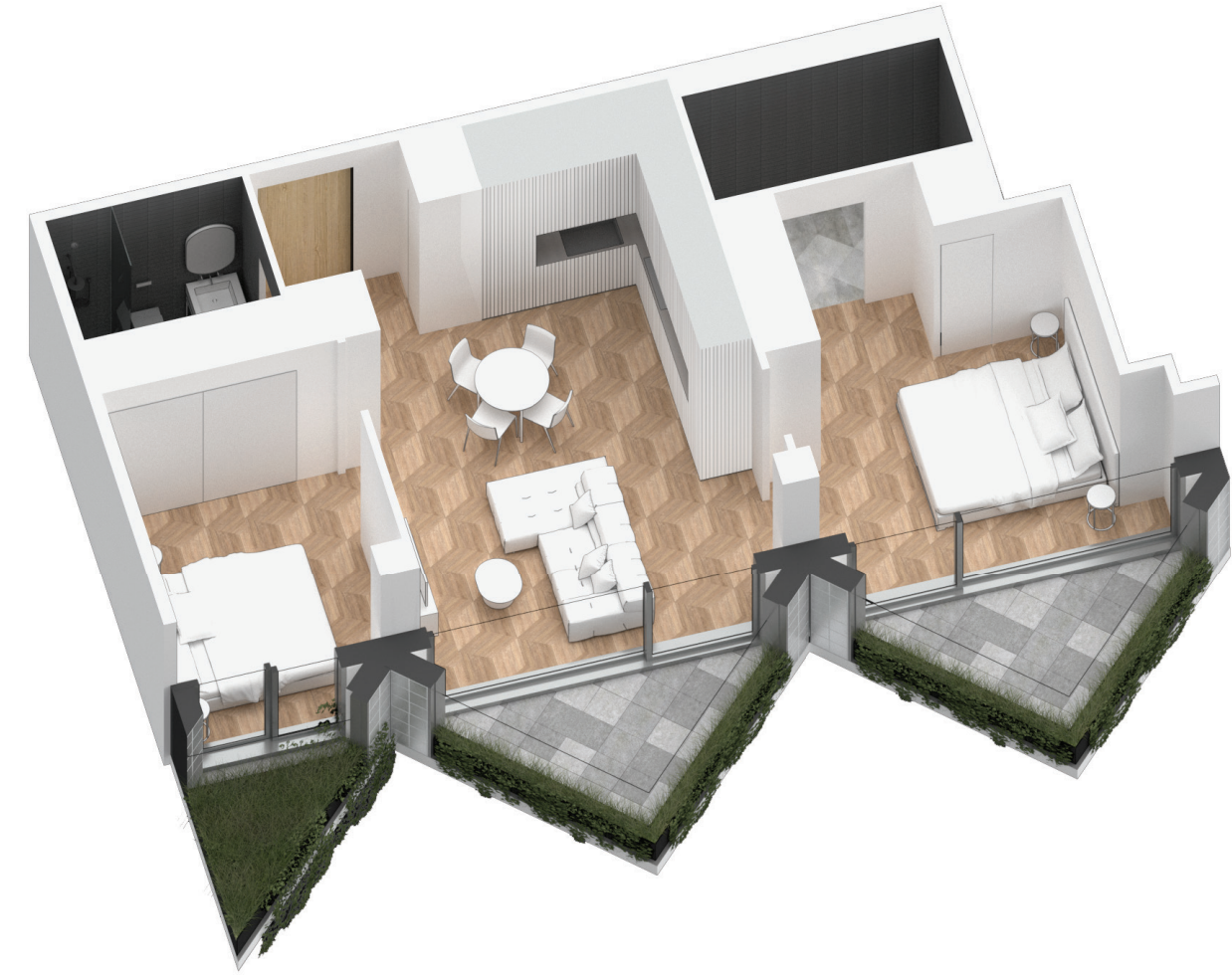
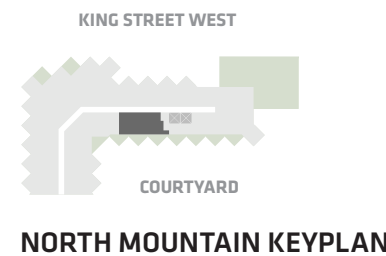
**2 Bedroom
2 Bathroom**

**Total Living:
1014 ft²**

Interior Living:
793 ft²

Exterior Living:
222 ft²

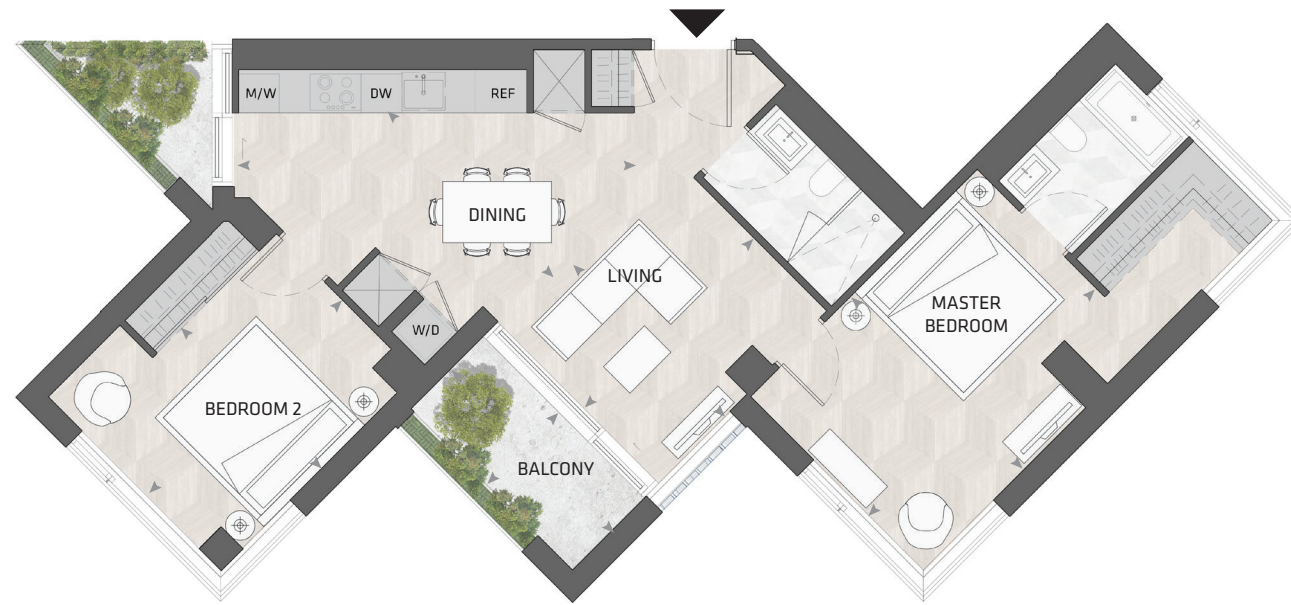
LIVING	14' 6" X 8' 0"
DINING	10' 10" X 9' 1"
MASTER BD	11' 5" X 9' 6"
BEDROOM 2	9' 6" X 10' 1"
BALCONY	13' 0" X 7' 9"



All dimensions and specifications are approximate. Certain plans are reverse or mirror image. Balcony square footages are estimated and may vary from that stated. Please see Sales Representative for details. Furniture not included. Refer to key plan for unit location and orientation. E. & O.E.

KING

HOME 611 N



2BD.50

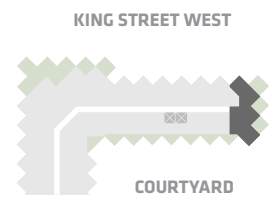
**2 Bedroom
2 Bathroom**

**Total Living:
1126 ft²**

Interior Living:
1010 ft²

Exterior Living:
116 ft²

LIVING	11' 11" X 11' 7"
DINING	19' 4" X 10' 7"
MASTER BD	15' 5" X 11' 9"
BEDROOM 2	13' 1" X 11' 9"
BALCONY	4' 11" X 11' 0"



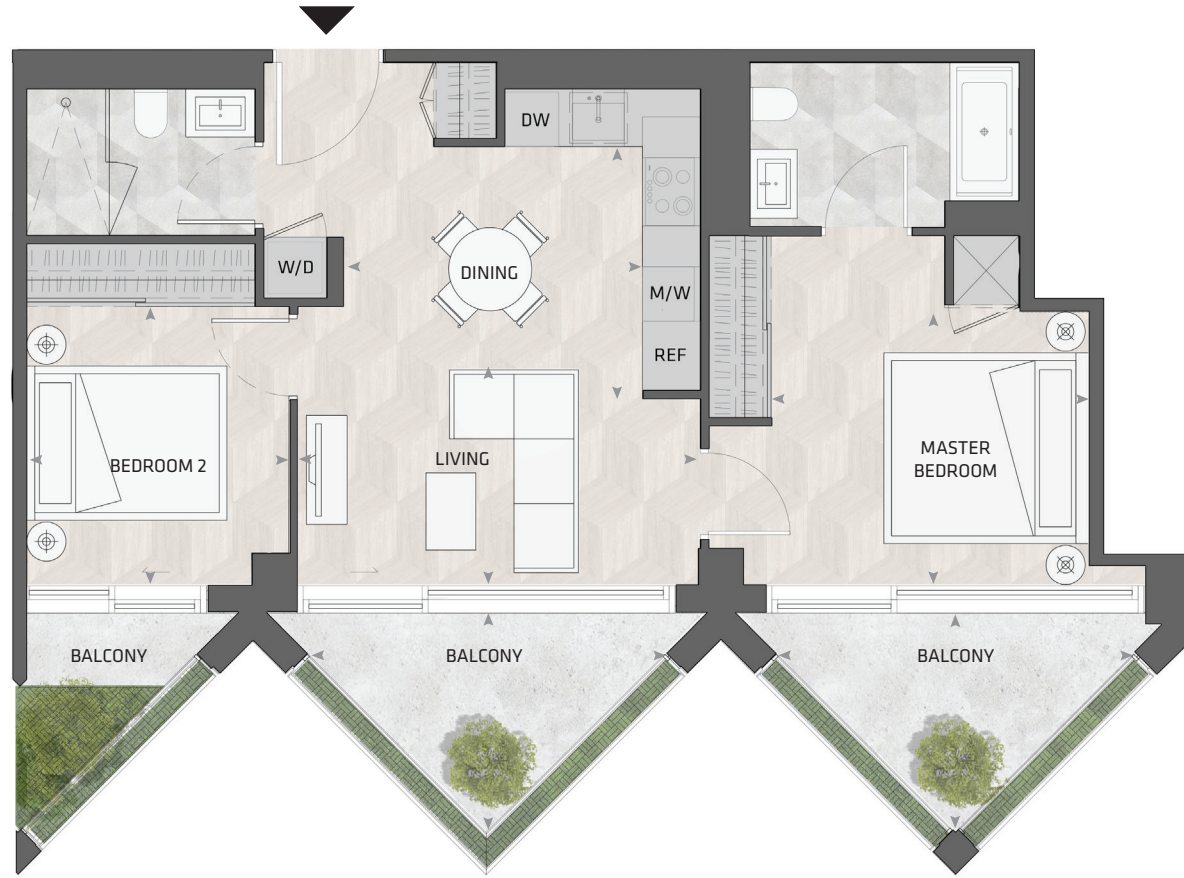
NORTH MOUNTAIN KEYPLAN



All dimensions and specifications are approximate. Certain plans are reverse or mirror image. Balcony square footages are estimated and may vary from that stated. Please see Sales Representative for details. Furniture not included. Refer to key plan for unit location and orientation. E. & O.E.

KING

HOME 701 N



2BD.06

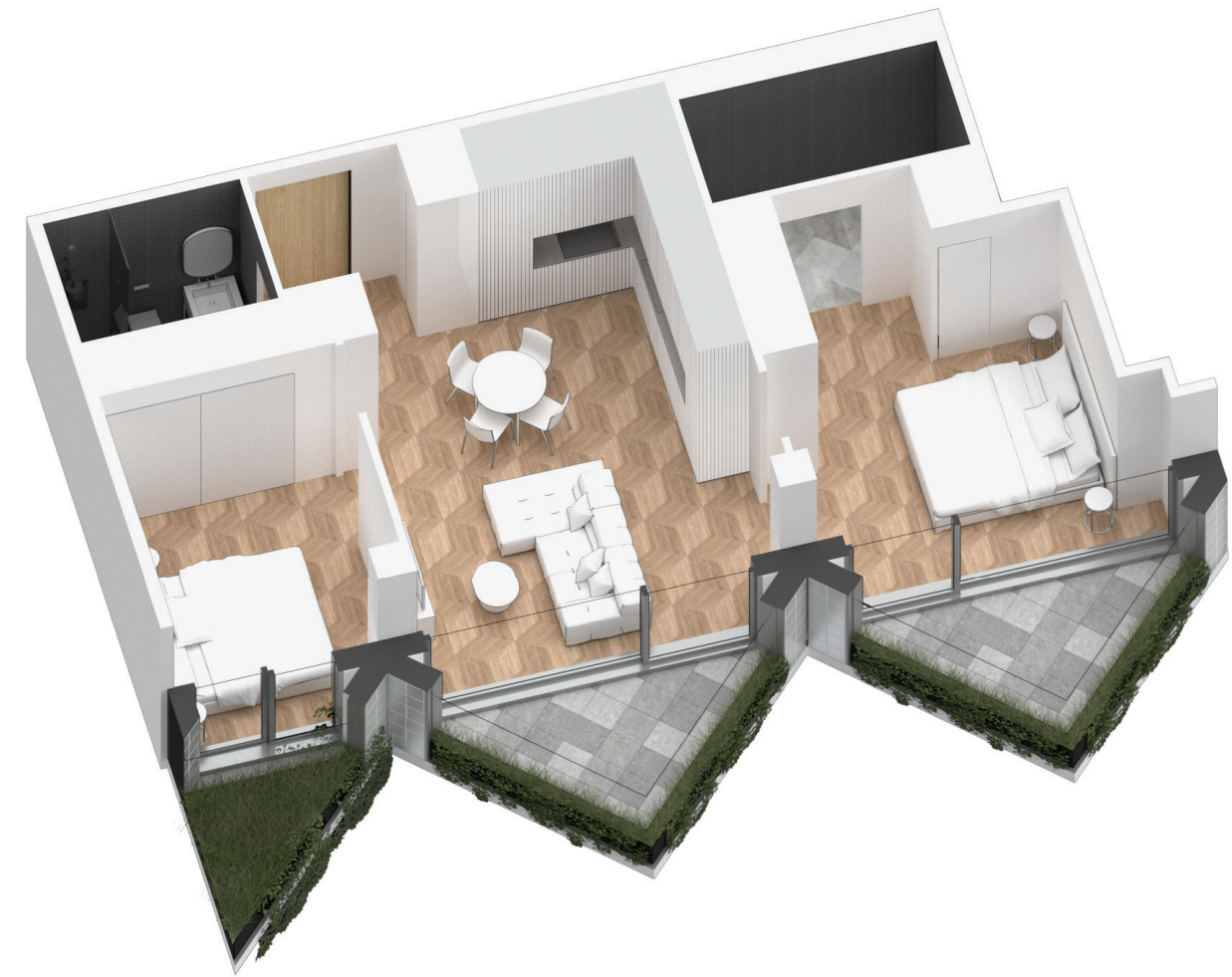
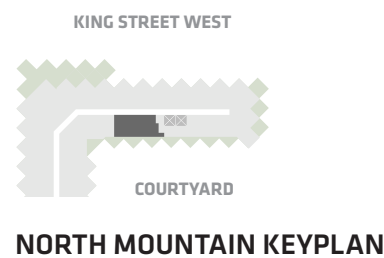
**2 Bedroom
2 Bathroom**

**Total Living:
1015 ft²**

Interior Living:
794 ft²

Exterior Living:
220 ft²

LIVING	14' 6" X 8' 0"
DINING	10' 10" X 9' 1"
MASTER BD	11' 5" X 9' 6"
BEDROOM 2	9' 6" X 10' 1"
BALCONY	13' 0" X 7' 9"



All dimensions and specifications are approximate. Certain plans are reverse or mirror image. Balcony square footages are estimated and may vary from that stated. Please see Sales Representative for details. Furniture not included. Refer to key plan for unit location and orientation. E. & O.E.

KING

HOME 710 N



2BD.50

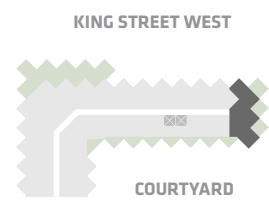
**2 Bedroom
2 Bathroom**

**Total Living:
1126 ft²**

Interior Living:
1010 ft²

Exterior Living:
116 ft²

LIVING	11' 11" X 11' 7"
DINING	19' 4" X 10' 7"
MASTER BD	15' 5" X 11' 9"
BEDROOM 2	13' 1" X 11' 9"
BALCONY	4' 11" X 11' 0"



NORTH MOUNTAIN KEYPLAN



All dimensions and specifications are approximate. Certain plans are reverse or mirror image. Balcony square footages are estimated and may vary from that stated. Please see Sales Representative for details. Furniture not included. Refer to key plan for unit location and orientation. E. & O.E.

KING

HOME 1007 N



2BD.32

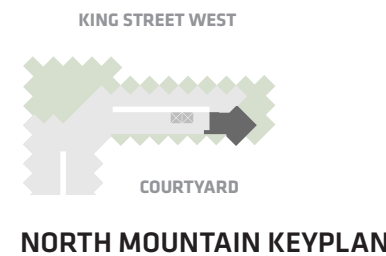
**2 Bedroom
2 Bathroom**

**Total Living:
1093 ft²**

Interior Living:
838 ft²

Exterior Living:
255 ft²

LIVING	10' 3" x 11' 5"
DINING	13' 11" x 8' 9"
MASTER BD	10' 7" x 8' 11"
BEDROOM 2	10' 5" x 8' 7"
BALCONY	13' 0" x 7' 9"
TERRACE	8' 3" x 6' 8"



All dimensions and specifications are approximate. Certain plans are reverse or mirror image. Balcony square footages are estimated and may vary from that stated. Please see Sales Representative for details. Furniture not included. Refer to key plan for unit location and orientation. E. & O.E.

KING

HOME 1002 N



2BD.23

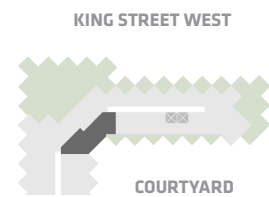
**2 Bedroom
2 Bathroom**

**Total Living:
1013 ft²**

Interior Living:
969 ft²

Exterior Living:
44 ft²

LIVING/ DINING	15' 10" x 15' 8"
MASTER BD	14' 8" x 13' 7"
BEDROOM 2	9' 11" x 8' 6"



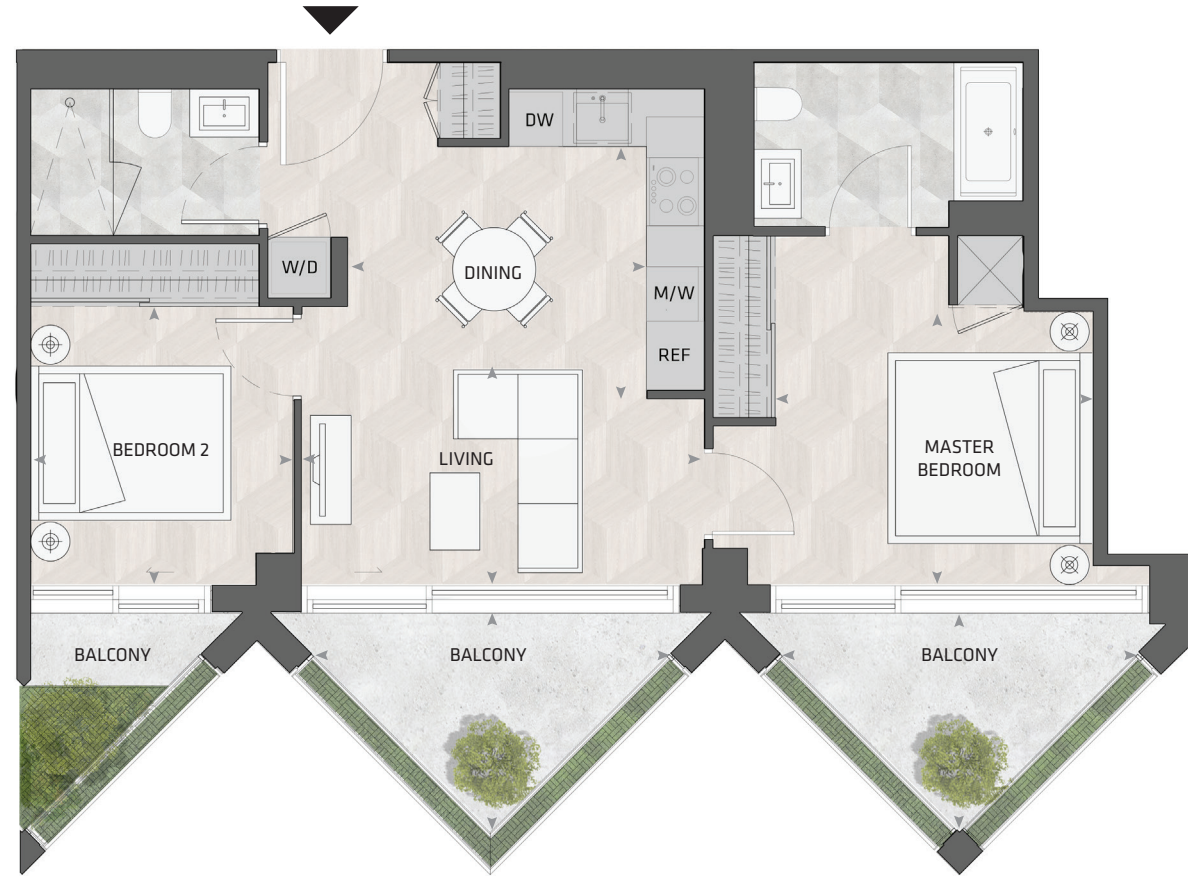
NORTH MOUNTAIN KEYPLAN



All dimensions and specifications are approximate. Certain plans are reverse or mirror image. Balcony square footages are estimated and may vary from that stated. Please see Sales Representative for details. Furniture not included. Refer to key plan for unit location and orientation. E. & O.E.

KING

HOME 1001 N



2BD.06

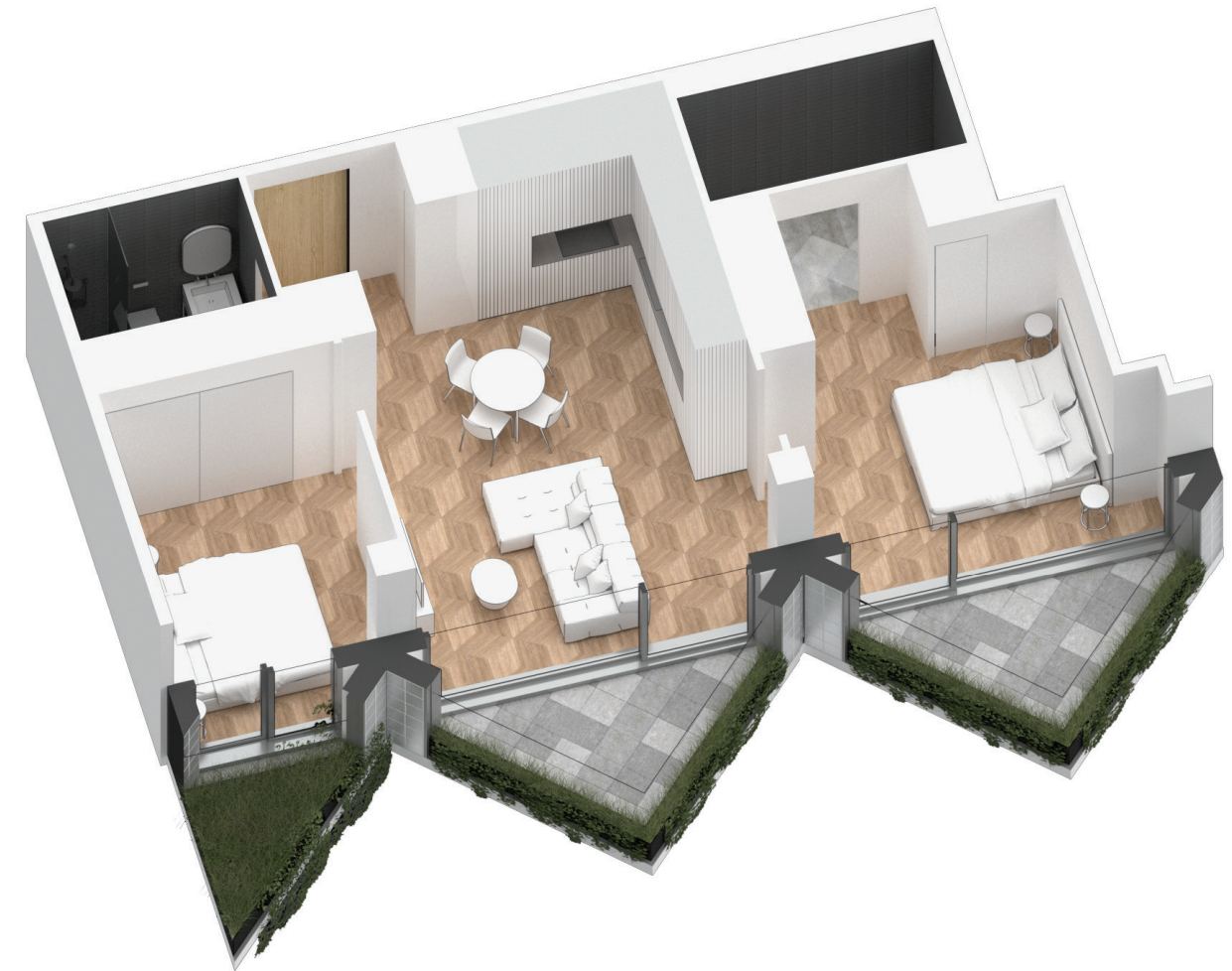
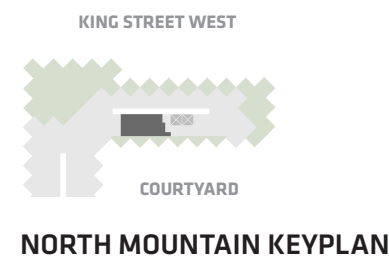
**2 Bedroom
2 Bathroom**

**Total Living:
1016 ft²**

Interior Living:
796 ft²

Exterior Living:
221 ft²

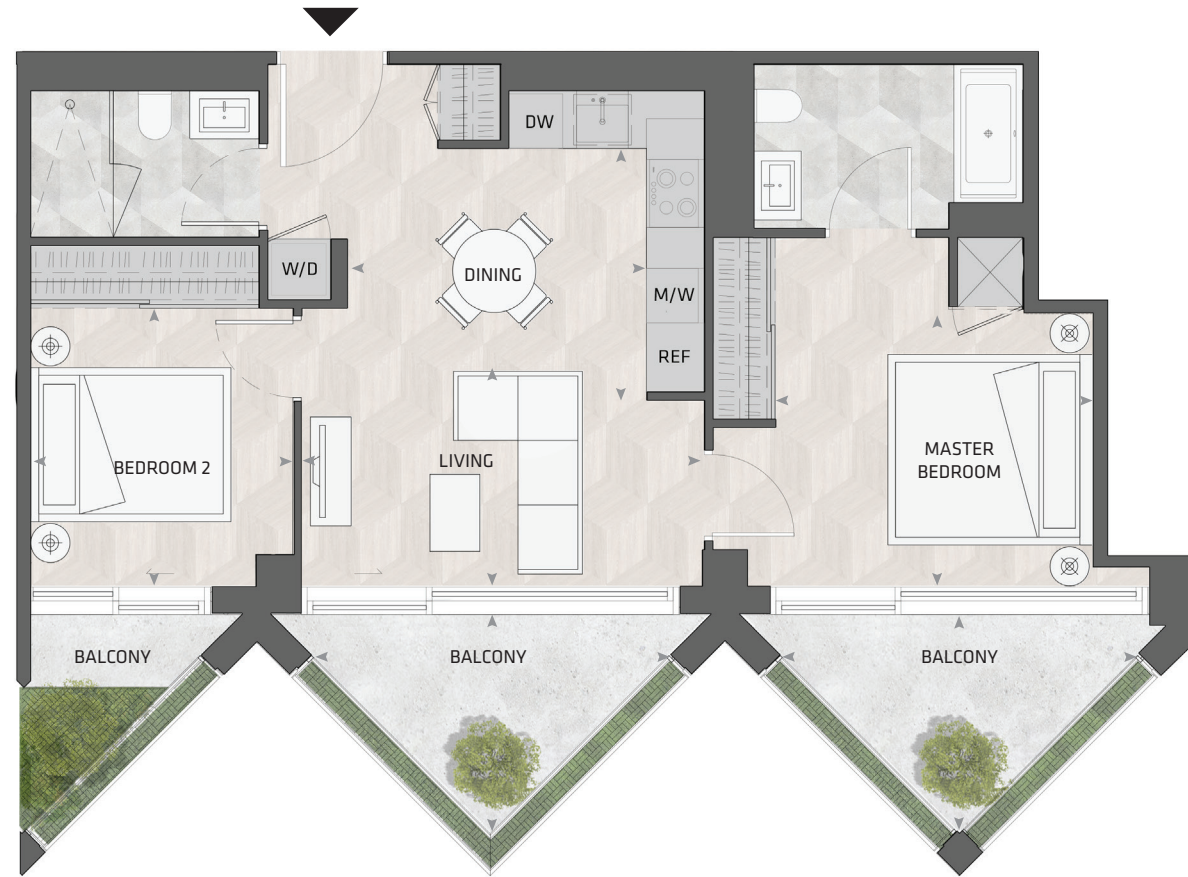
LIVING	14' 6" X 8' 0"
DINING	10' 10" X 9' 1"
MASTER BD	11' 5" X 9' 6"
BEDROOM 2	9' 6" X 10' 1"
BALCONY	13' 0" X 7' 9"



All dimensions and specifications are approximate. Certain plans are reverse or mirror image. Balcony square footages are estimated and may vary from that stated. Please see Sales Representative for details. Furniture not included. Refer to key plan for unit location and orientation. E. & O.E.

KING

HOME 801 N



2BD.06

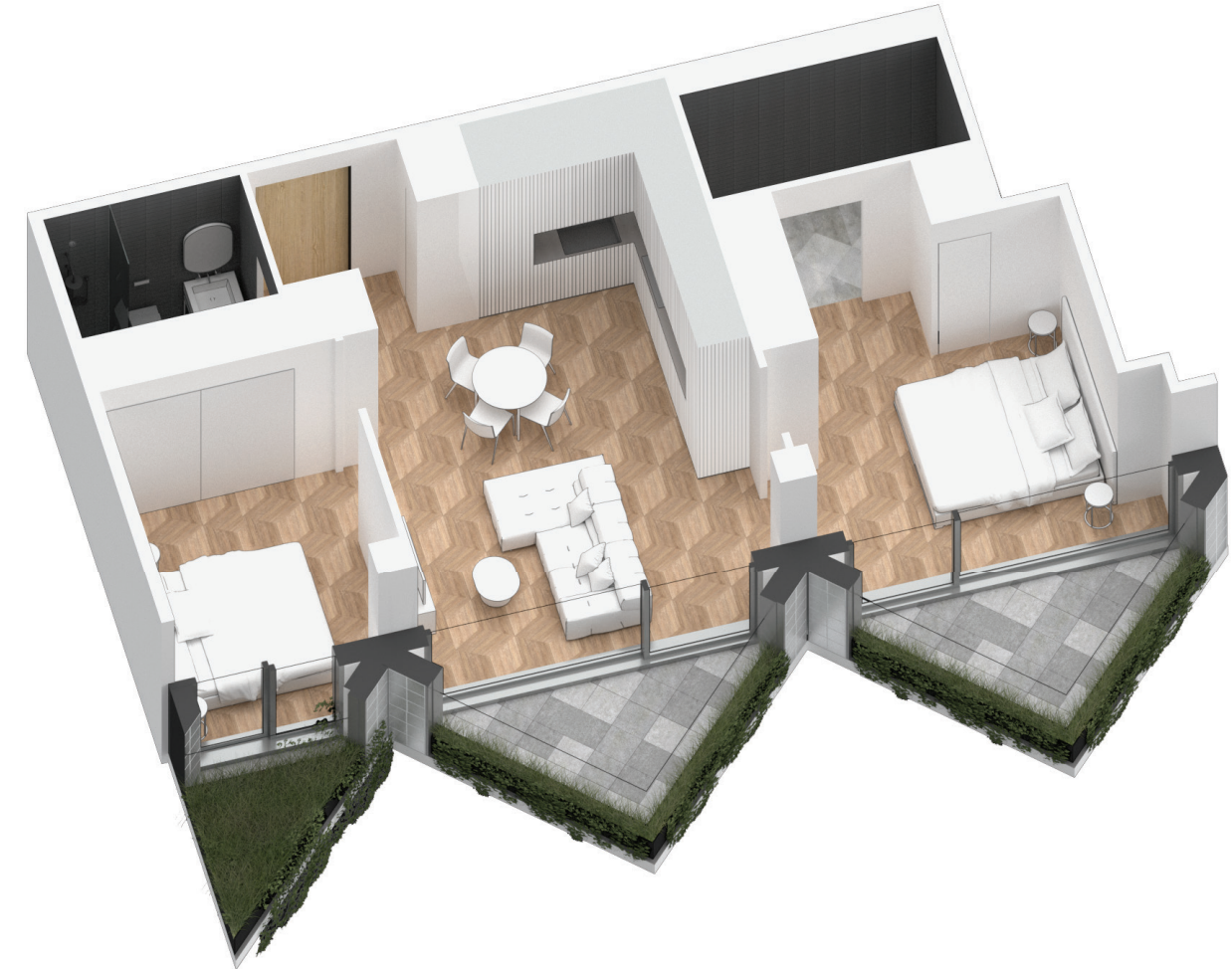
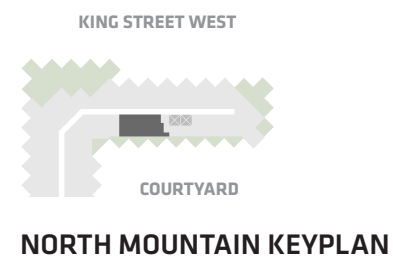
**2 Bedroom
2 Bathroom**

**Total Living:
1015 ft²**

Interior Living:
794 ft²

Exterior Living:
221 ft²

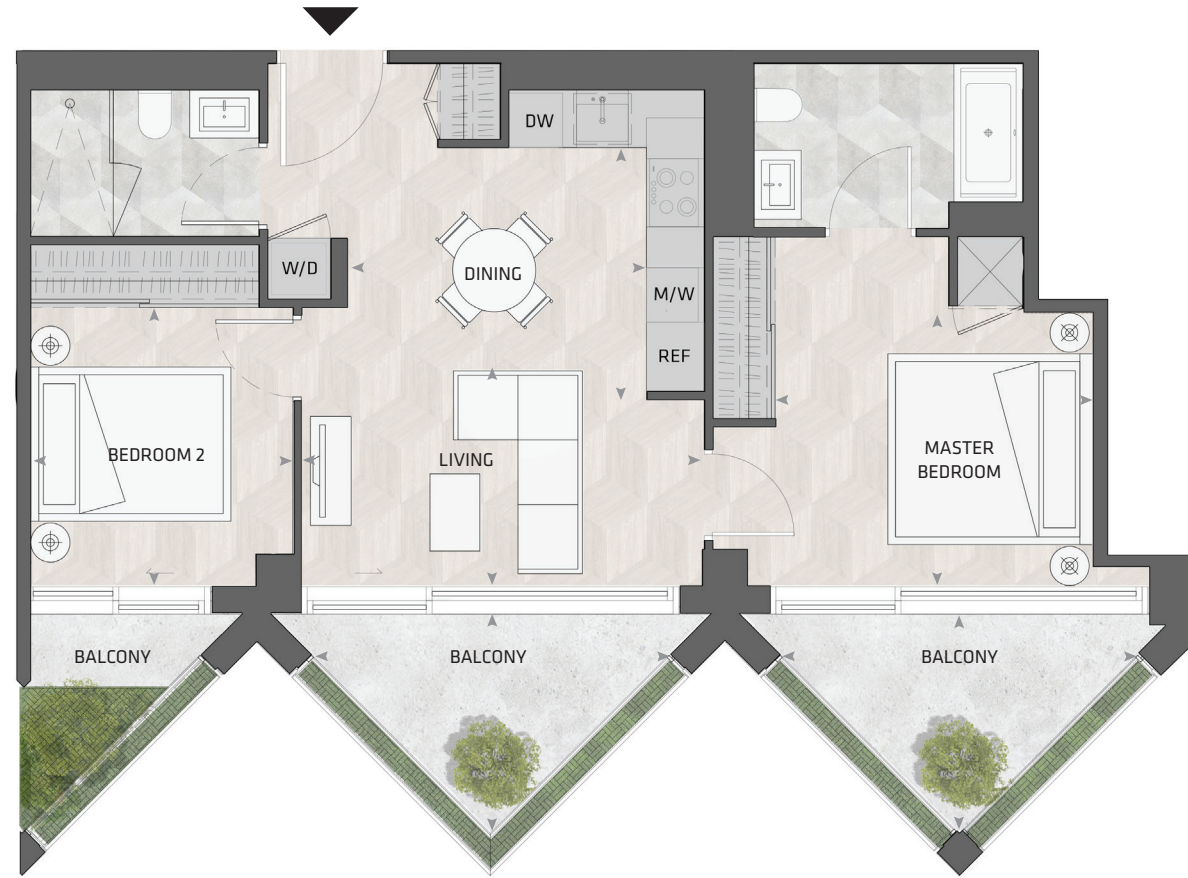
LIVING	14' 6" X 8' 0"
DINING	10' 10" X 9' 1"
MASTER BD	11' 5" X 9' 6"
BEDROOM 2	9' 6" X 10' 1"
BALCONY	13' 0" X 7' 9"



All dimensions and specifications are approximate. Certain plans are reverse or mirror image. Balcony square footages are estimated and may vary from that stated. Please see Sales Representative for details. Furniture not included. Refer to key plan for unit location and orientation. E. & O.E.

KING

HOME 901 N



2BD.06

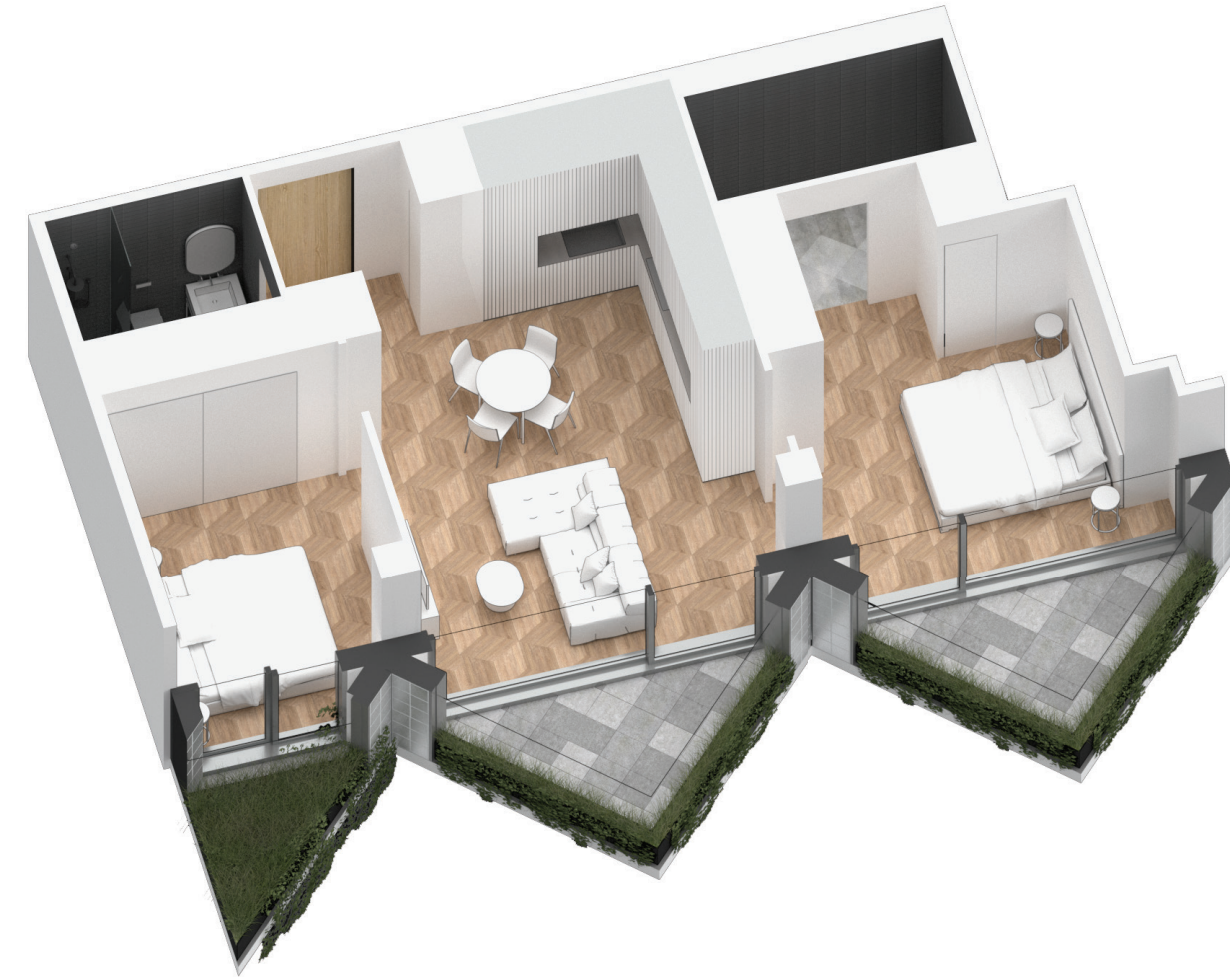
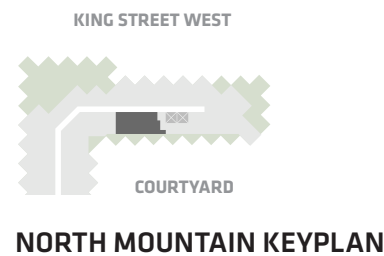
**2 Bedroom
2 Bathroom**

**Total Living:
1015 ft²**

Interior Living:
794ft²

Exterior Living:
221 ft²

LIVING	14' 6" X 8' 0"
DINING	10' 10" X 9' 1"
MASTER BD	11' 5" X 9' 6"
BEDROOM 2	9' 6" X 10' 1"
BALCONY	13' 0" X 7' 9"



All dimensions and specifications are approximate. Certain plans are reverse or mirror image. Balcony square footages are estimated and may vary from that stated. Please see Sales Representative for details. Furniture not included. Refer to key plan for unit location and orientation. E. & O.E.

KING

HOME 803 N



2BD.27

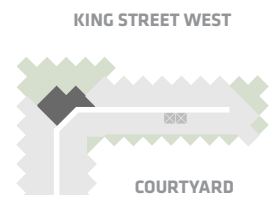
**2 Bedroom
2 Bathroom**

**Total Living:
1148 ft²**

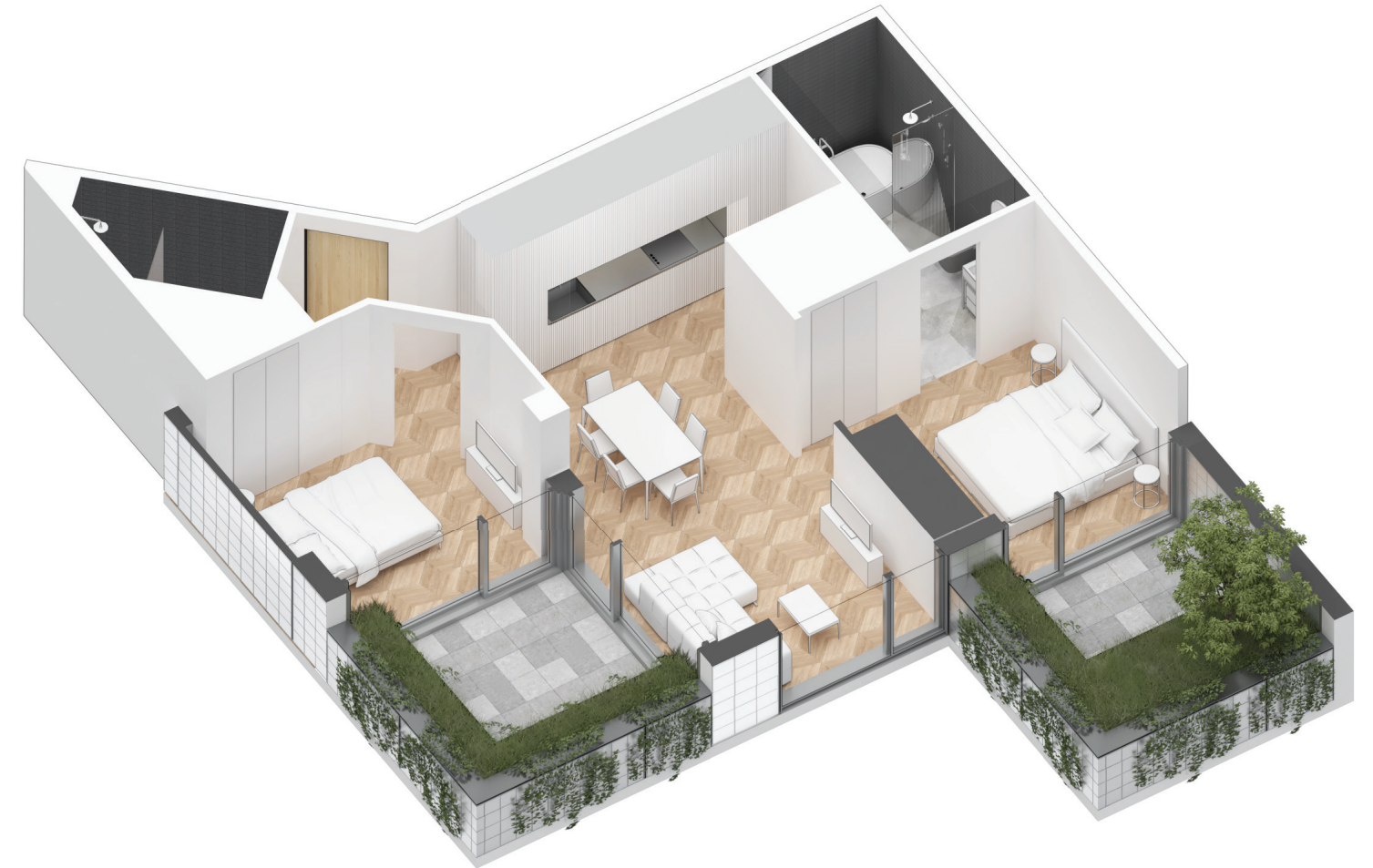
Interior Living:
861 ft²

Exterior Living:
287 ft²

LIVING	10' 11" X 11' 11"
DINING	10' 11" X 9' 8"
MASTER BD	9' 9" X 11' 5"
BEDROOM 2	11' 8" X 9' 8"
TERRACE A	9' 1" X 9' 1"
TERRACE B	9' 1" X 6' 8"



NORTH MOUNTAIN KEYPLAN



All dimensions and specifications are approximate. Certain plans are reverse or mirror image. Balcony square footages are estimated and may vary from that stated. Please see Sales Representative for details. Furniture not included. Refer to key plan for unit location and orientation. E. & O.E.